

# Product 13. Deep Recessed 2W LED Pinspot

Power Led:

1x LED XPG - CRI 80

Resinatura - *Resin*: No

Tipo di cavo incluso - *Cable type included*: Si 170mm 2x0,35mm<sup>2</sup>/ Yes 170mm 2x0,35mm<sup>2</sup>

Tipo di attacco - *Connector type*: Puntalini a crimpare - Crimp ferrules

Input (V - mA) : 3,4V - 600mA

Potenza nominale (W) - *Nominal power (W)*: 2W

Potenza reale (W) - *Real power (W)*: 2,25W

Dimmerabile - *Dimmable*: SI, DALI/1-10V

Temperatura sulla superficie del vetro - *Temperature on the surface of the glass*: 40°C

Orientabilità - *Adjustability*: No

Carrabilità - *Drive*: No

Filo incandescenza - *Glow Wire*: 850°

Alimentatore - *Power supply*: Remote

Classe d'isolamento - *Insulation class*: III

IP 44

IK 05

Peso - *Weigh*: 0,055Kg

Volume - *Volume*: 0,2dm<sup>3</sup>

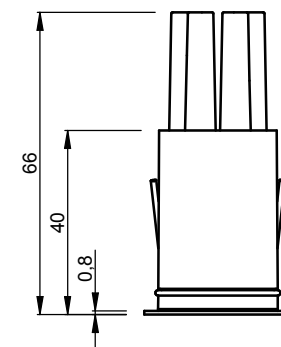
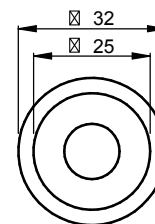
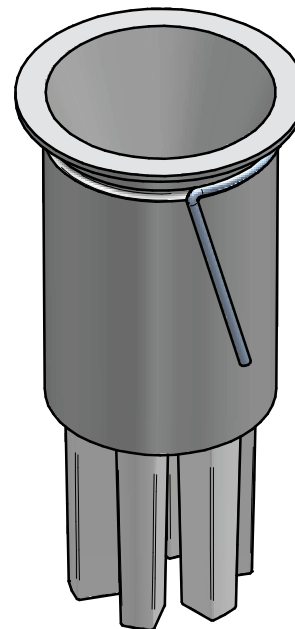
☑ : OK

CE : OK

Wired: Series

Constant current

*Recessed conical spot with backward optics with 1 cutting-edge POWER LED. Frontal aluminium lathed cone painted white, black, grey or golden and rear mounted heat sink in polished cast aluminium. Both finishes are powder coated with embossed surface while gilding takes place through galvanic process. Installation into drywall or generally on false ceiling of thickness varying between 5 mm and 20 mm. Recessed installation by means of springs into a specific hole with 27mm diameter. Single or series connection to the NOT included ON/OFF, DALI or 1/10V driver. Application in indoor environments IP44 on ceilings, walls or furniture.*



LED White :

Natural White, Warm White, Super Warm White  
4000°K, 3000°K, 2700°K

Color LED :

-

Optic :

8°- 15°- 30°- 45°

LED RGB :

-

Optic :

-